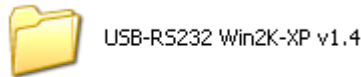
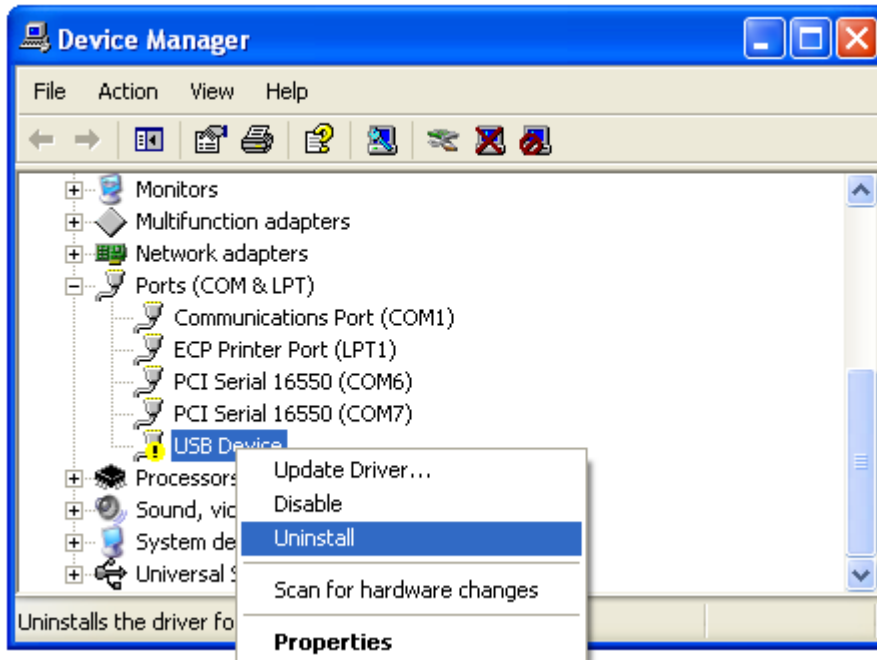


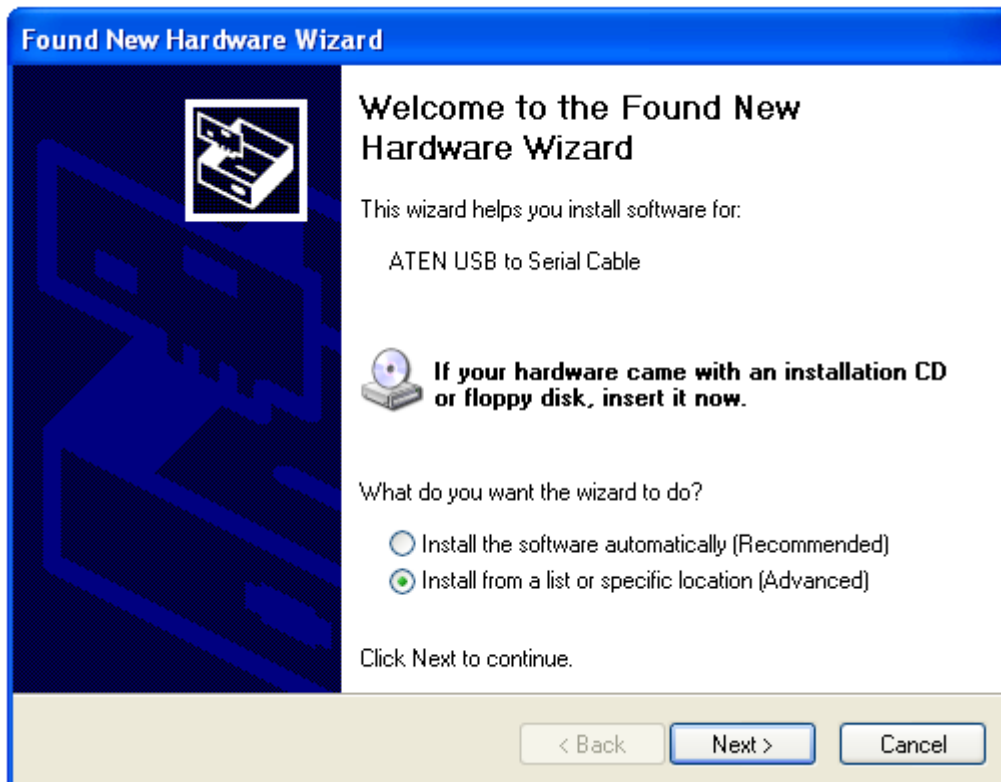
1. Save the file **USB-RS232 Win2K-XP v1.4.zip** in a temporary folder and unzip the file to create the following directory.



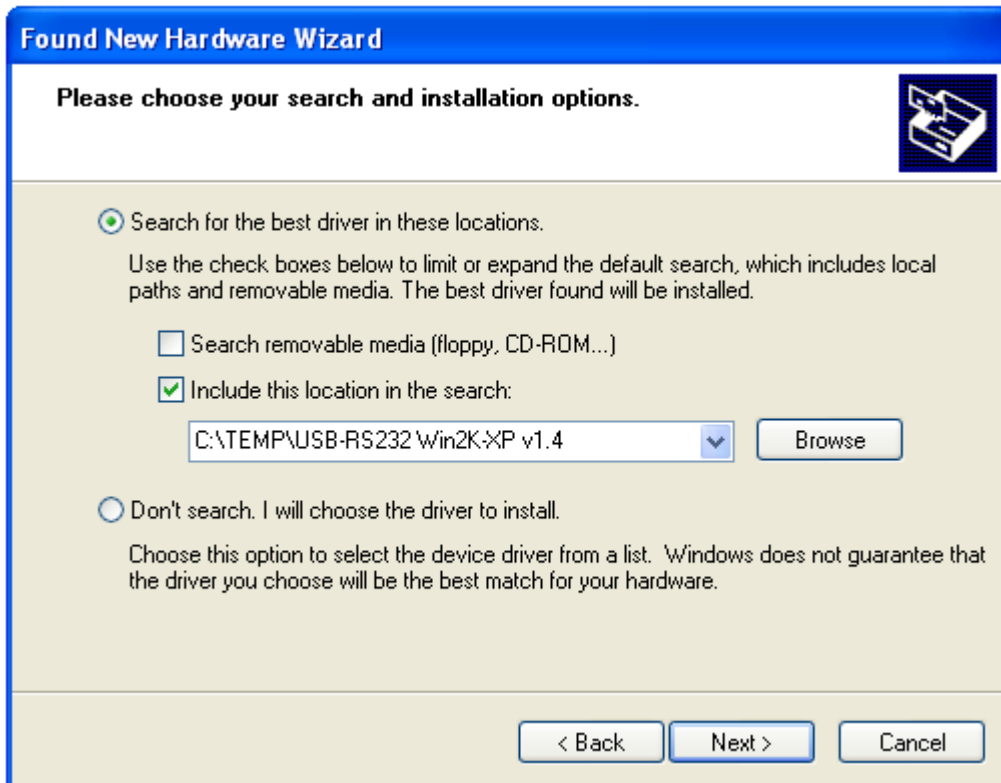
2. If the adaptor is plugged in and device is listed in the device manager but indicated as faulty, uninstall the device.



3. Select the **Add Hardware Wizard** or re-attach the adaptor. The adaptor should be seen. Select **Install from a list or specified location**.



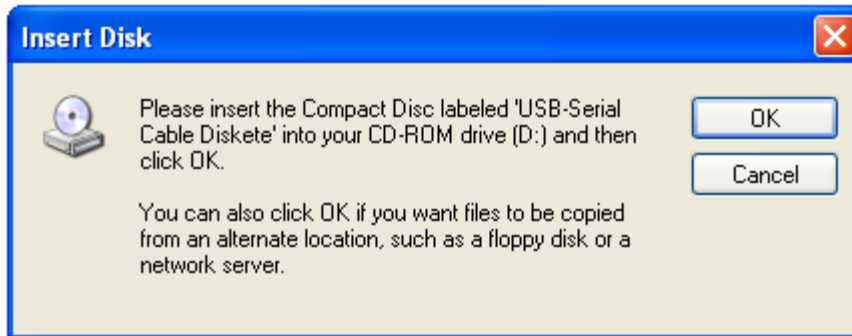
4. Select the following and use **Browse** to find the folder you un-zipped and press **Next**.



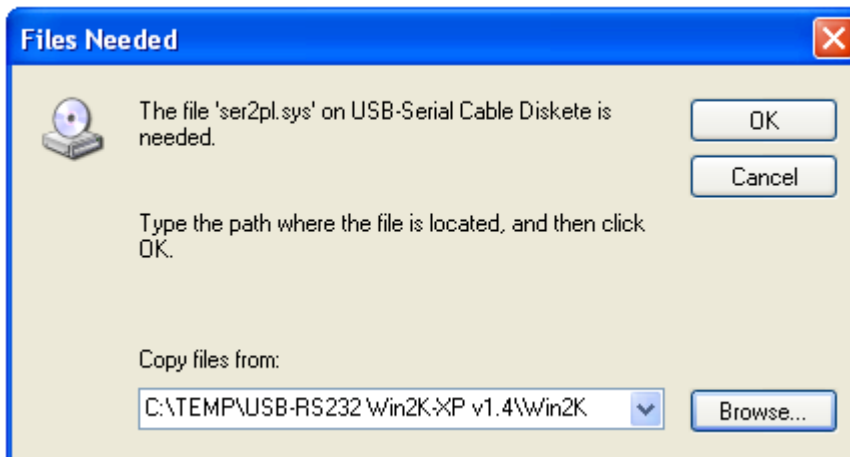
5. The following window will appear. Please press **Continue Anyway**.



- When this window appears, press **OK**.



- Select the **Win2K** subdirectory using **Browse** and open **ser2pl.sys**.



- Press **Finish** to complete the installation.

