

# Actisense™ PC Software install guide

## To install Actisense™ PC software

Replace the generic “<Product Name>” text below with the name of the actual software you are installing (e.g. “NDC Control Centre”, “NDC Flash Centre” etc.)

1. Download the latest version of the software from the Actisense™ website, or locate the files on the Actisense™ CD included with your product.
2. If a previous version of the software has already been installed, uninstall the previous version and delete the program directory before installing the new version. Refer to the [To uninstall Actisense PC software](#) section for full details.
3. If the program is contained within a zip file, extract the three files ('<Product Name>.001,' '<Product Name>.002' and 'setup.exe') that are contained within the zip file using any available unzip program to a temporary directory (e.g. "C:\Temp").
4. Double click on the 'setup.exe' program file and follow the on-screen instructions of the standard Windows™ install program. The install location can be change at this point, however, the default location is normally acceptable (refer to **Figure 1 & 2**).
5. Once the install operation is complete, the temporary files and/ or directory can be deleted. Keep the original zip file safe.
6. To start / run the program, use the Windows™ 'Start' menu and navigate to the installed program's directory. There will be a program icon - double click on it (refer to **Figure 3 & 4**).

### Useful Tip:

If you access the program regularly you can 'copy and paste' the program icon from the Windows™ 'Start' menu on to the desktop or the 'Quick Launch' short-cut bar to create a easy to access short-cut.

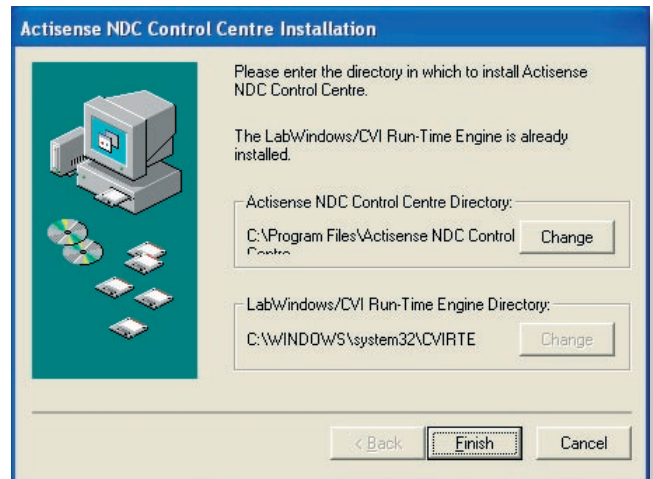


Figure 1

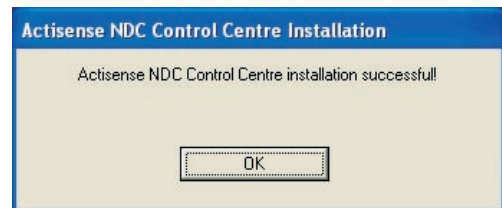


Figure 2

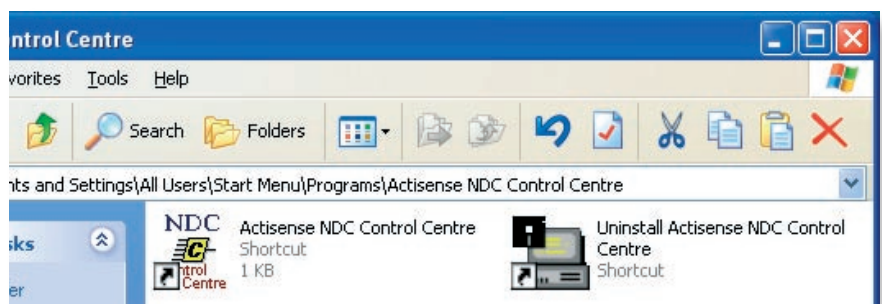


Figure 3

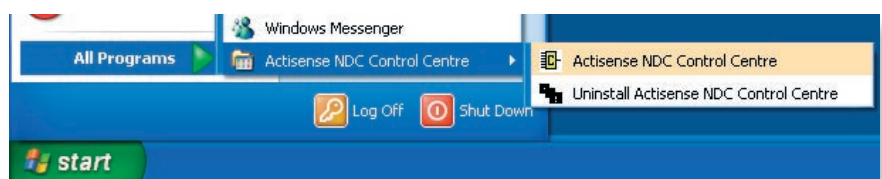


Figure 4

# Actisense™ PC Software uninstall guide

## To uninstall Actisense™ PC software

Replace the generic “<Product Name>” text below with the name of the actual software you are installing (e.g. “NDC Control Centre”, “NDC Flash Centre” etc.)

1. If at any time you wish to remove the installed Actisense™ program, simply use the standard Windows™ ‘**Start → All Programs → Actisense <Product Name> → Uninstall Actisense <Product Name>**’ menu option to perform this operation (refer to **Figure 4**).
2. Alternatively, there is a very convenient uninstall icon included in the program’s folder (see **Figure 3**).
3. Once the uninstall operation has been requested, the confirmation box (**Figure 5**) will be displayed. Answer ‘Yes’ and the uninstall operation will be performed automatically. After successfully uninstalling the Actisense PC software, the uninstall completion box will appear (refer to **Figure 6**).
4. In addition, the program directory can also be deleted to completely remove the program. In this way all the program files will be uninstalled in a clean and complete manner.

If however, you are going to install a new version after this uninstall, you can keep the program directory and the configuration file stored within it. In this way, all the user settings you had for the previous version will be immediately available with the new version.

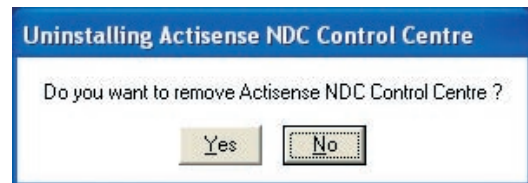


Figure 5

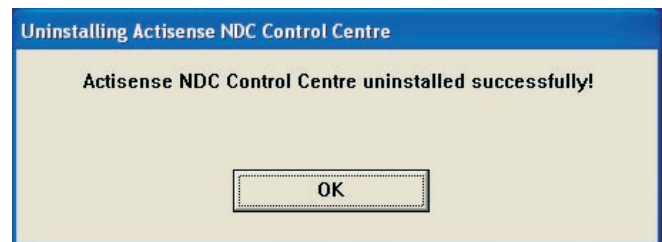


Figure 6

Active Research Limited  
Unit 5, Wessex Trade Centre  
Ringwood Road, Poole  
Dorset UK BH12 3PF

t: +44 (0)1202 746682  
f: +44 (0)1202 746683  
e: sales@actisense.com  
[www.actisense.com](http://www.actisense.com)

**Actisense™**

Actisense from Active Research